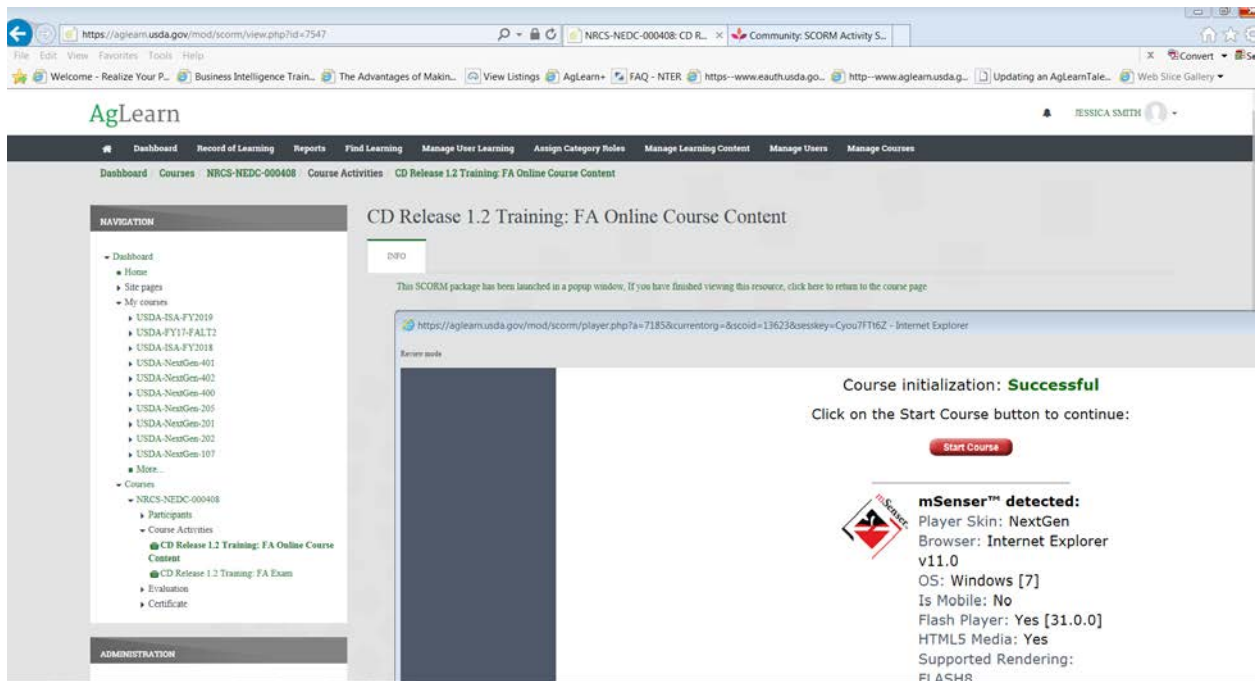
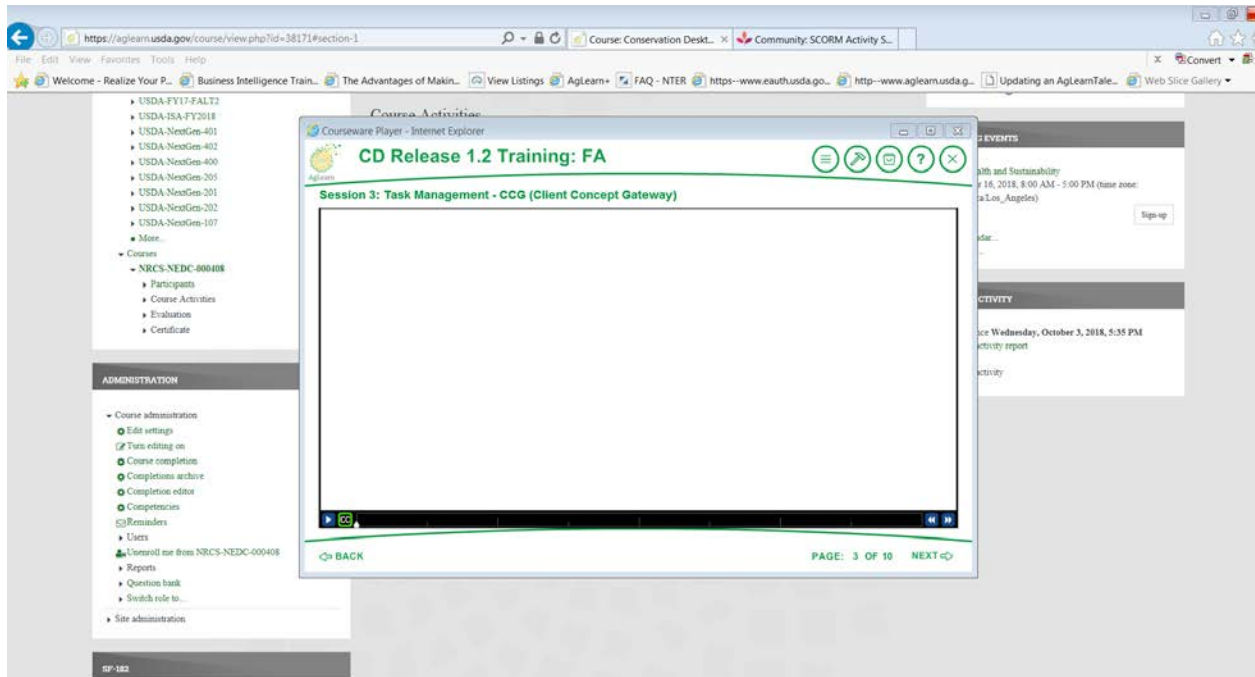


SCORM package with new window

You click the activity and hit enter, and a new window pops up:

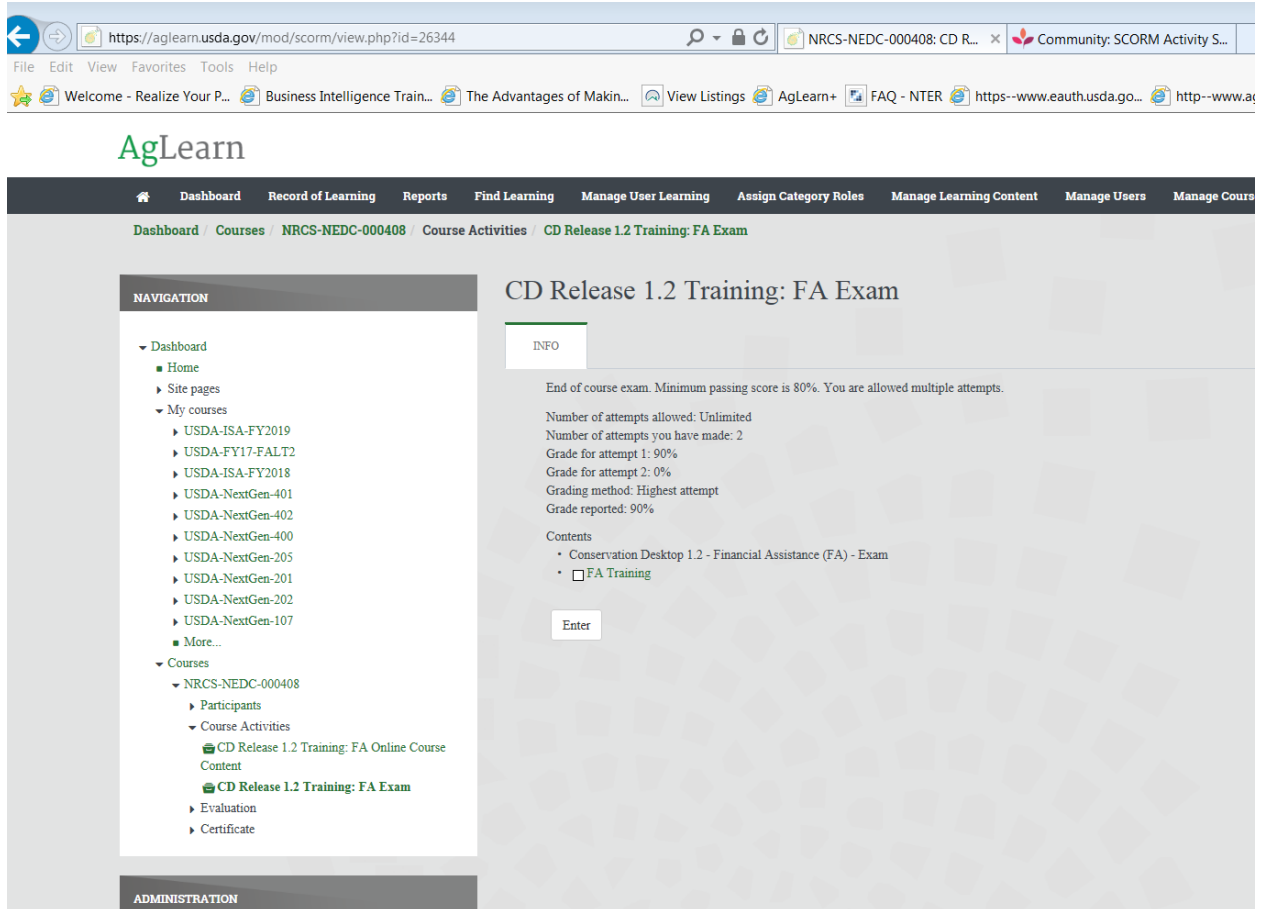


Then when you hit start course in the new window the first new window is replaced with the course (SCORM content):

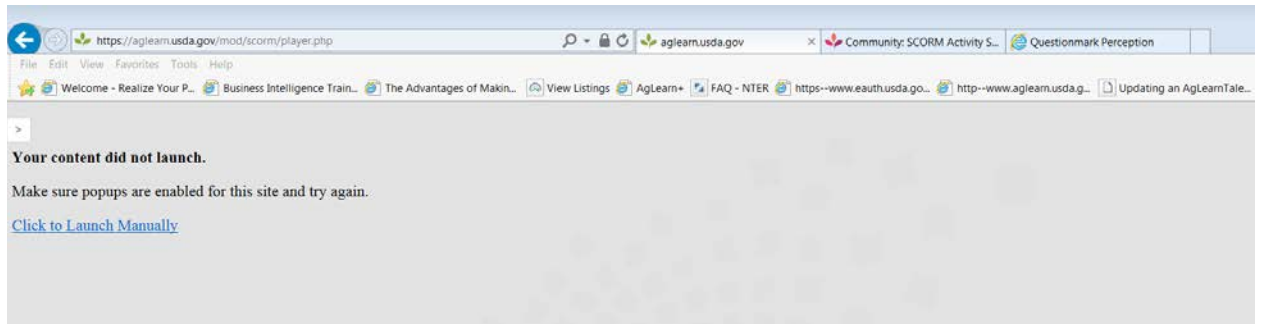


This seems to work like it's supposed to. However, when we select new window, our QuestionMark exams do not show up in the new window with that option, so we have to select new window (simple). I'm not why. I'm not sure the difference.

However, with new window (simple)



After you click enter (above), the main course page is replaced with this page:



And then a new window is launched with the QM exam (you can see the tab at the top). So once you complete the exam, you close the exam window, and come back to this one and have to hit back in the browser in order to get back to the course screen.